

**PLEASE CHECK WWW.MOLEX.COM FOR LATEST PART INFORMATION**

**Part Number:** [0010191091](#)  
**Status:** **Active**  
**Overview:** [kk](#)  
**Description:** 5.08mm (.200") Pitch KK® Header, Vertical, with Polarizing Backwall, 9 Circuits, Tin (Sn) Plating

**Documents:**

[3D Model](#) [RoHS Certificate of Compliance \(PDF\)](#)  
[Drawing \(PDF\)](#)

**Agency Certification**

UL E29179

**General**

Product Family PCB Headers  
 Series [2599](#)  
 Application Wire-to-Board  
 Overview [kk](#)  
 Product Name KK®

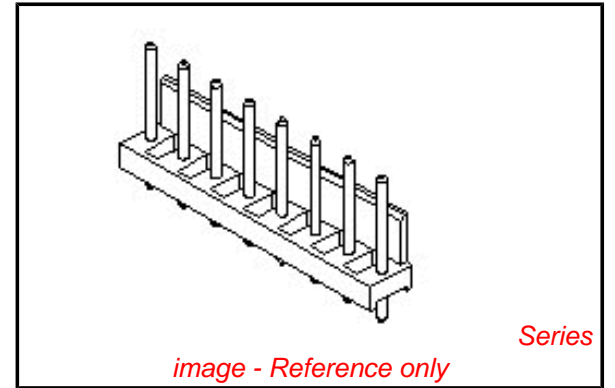
**Physical**

Breakaway No  
 Circuits (Loaded) 9  
 Circuits (maximum) 9  
 Color - Resin Natural  
 Durability (mating cycles max) 50  
 First Mate / Last Break No  
 Flammability 94V-2  
 Glow-Wire Compliant No  
 Guide to Mating Part No  
 Keying to Mating Part None  
 Lock to Mating Part None  
 Material - Metal Brass  
 Material - Plating Mating Tin  
 Material - Plating Termination Tin  
 Material - Resin Nylon  
 Number of Rows 1  
 Orientation Vertical  
 PC Tail Length (in) 0.175 In  
 PC Tail Length (mm) 4.45 mm  
 PCB Retention None  
 PCB Thickness Recommended (in) 0.062 In  
 PCB Thickness Recommended (mm) 1.60 mm  
 Packaging Type Bag  
 Pitch - Mating Interface (in) 0.200 In  
 Pitch - Mating Interface (mm) 5.08 mm  
 Shrouded Partial  
 Stackable Yes  
 Surface Mount Compatible (SMC) No  
 Temperature Range - Operating 0°C to +75°C  
 Termination Interface: Style Through Hole

**Electrical**

Current - Maximum per Contact 7A  
 Voltage - Maximum 250V

**Material Info**



**EU RoHS** **China RoHS**

**Compliance Status**

**Not Reviewed**

**REACH SVHC**

**Not Reviewed**

**Halogen-Free**

**Status**

**Not Reviewed**

**Need more information on product environmental compliance?**

Email [productcompliance@molex.com](mailto:productcompliance@molex.com)  
 For a multiple part number RoHS Certificate of Compliance, [click here](#)

Please visit the [Contact Us](#) section for any non-product compliance questions.

**Search Parts in this Series**

[2599Series](#)

**Mates With**

KK® Crimp Terminal Housing [3001](#) , [5058](#)

Old Part Number

2599-09A

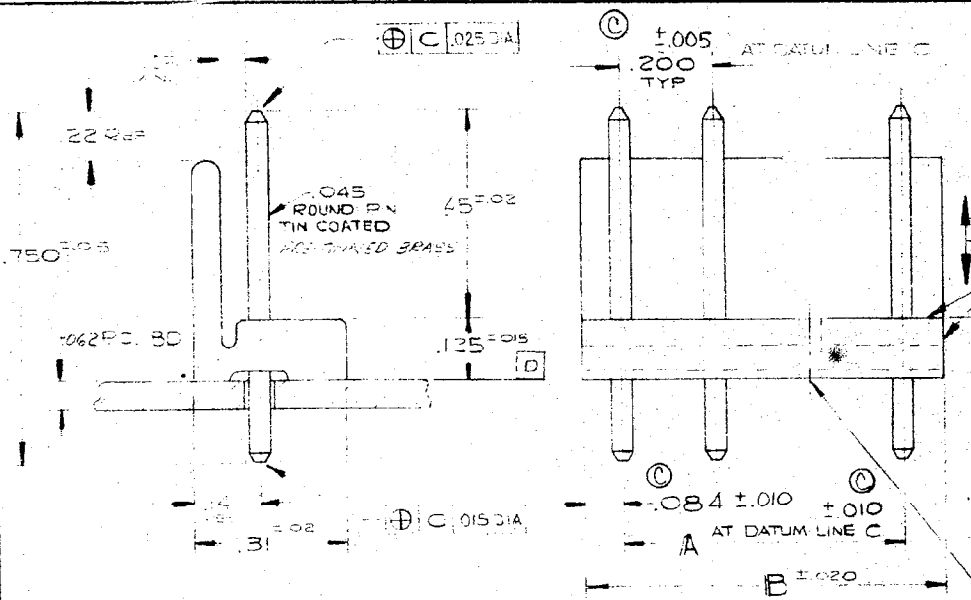
**Reference - Drawing Numbers**

Sales Drawing

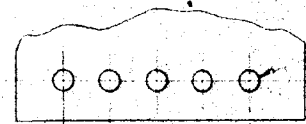
SDA-2599-NA\*

This document was generated on 05/24/2010

**PLEASE CHECK [WWW.MOLEX.COM](http://WWW.MOLEX.COM) FOR LATEST PART INFORMATION**



PART NO. SEE CHART  
SDA-2599-NA\*



RECOMMENDED PC BOARD HOLE DIMENSIONS

10-19-1181	A-2599-18A	18	3.400	3.568
1171	A-2599-17A	17	3.200	3.368
1161	A-2599-16A	16	3.000	3.168
1151	A-2599-15A	15	2.800	2.968
1141	A-2599-14A	14	2.600	2.768
1131	A-2599-13A	13	2.400	2.568
1121	A-2599-12A	12	2.200	2.368
1111	A-2599-11A	11	2.000	2.168
1101	A-2599-10A	10	1.800	1.968
1091	A-2599-9A	9	1.600	1.768
1081	A-2599-8A	8	1.400	1.568
1071	A-2599-7A	7	1.200	1.368
1061	A-2599-6A	6	1.000	1.168
1051	A-2599-5A	5	.800	.968
1041	A-2599-4A	4	.600	.768
1031	A-2599-3A	3	.400	.568
10-19-1021	A-2599-2A	2	.200	.368
PART NO	ENG NO	NO OF CIRCUITS	DIM. A	DIM. B

FOR VOID LOC. SEE CHART ON SHEET 2

- NOTES:
- A) 1. PIN PUSH OUT FORCE: 3 LBS. MIN.
  2. BURRS NOT TO EXTEND BELOW SURFACE D
  - C. CODE LETTER PRECEDING PART NO. INDICATES MFG LOCATION I - IRELAND
  - \* PARTS TO MEET MOLEX PRODUCT SPEC 0-39

WAFER MATERIAL: NYLON-NATURAL COLOR .200 CENTER DISTANCE

<p>UNLESS OTHERWISE SPECIFIED TOLERANCES:            3-PLACE DEC. DIMS ±.008            2-PLACE DEC. DIMS ±.010            FRACTIONAL DIMS ±1/64            ANGULAR ±1/2°</p> <p>DRAW WHERE APPLICABLE MUST REMAIN WITHIN DIMENSIONS, UNLESS OTHERWISE SPECIFIED.</p> <p>DO NOT SCALE DRAWING</p>	<p>REVISIONS</p> <p>REVISED NOTE 1            ECO # 612            4-3-72 TFS/ER            2-2-72 HJ/BAW            2-2-72 HJ/BAW</p>	<p>DATE: 1-13-72</p> <p>SHEET 2 OF 2</p> <p>SDA-2599-NA*</p>
<p>REVISIONS</p> <p>1. 1-13-72            2. 1-13-72            3. 1-13-72            4. 1-13-72            5. 1-13-72            6. 1-13-72            7. 1-13-72            8. 1-13-72            9. 1-13-72            10. 1-13-72            11. 1-13-72            12. 1-13-72            13. 1-13-72            14. 1-13-72            15. 1-13-72            16. 1-13-72            17. 1-13-72            18. 1-13-72            19. 1-13-72            20. 1-13-72            21. 1-13-72            22. 1-13-72            23. 1-13-72            24. 1-13-72            25. 1-13-72            26. 1-13-72            27. 1-13-72            28. 1-13-72            29. 1-13-72            30. 1-13-72            31. 1-13-72            32. 1-13-72            33. 1-13-72            34. 1-13-72            35. 1-13-72            36. 1-13-72            37. 1-13-72            38. 1-13-72            39. 1-13-72            40. 1-13-72            41. 1-13-72            42. 1-13-72            43. 1-13-72            44. 1-13-72            45. 1-13-72            46. 1-13-72            47. 1-13-72            48. 1-13-72            49. 1-13-72            50. 1-13-72            51. 1-13-72            52. 1-13-72            53. 1-13-72            54. 1-13-72            55. 1-13-72            56. 1-13-72            57. 1-13-72            58. 1-13-72            59. 1-13-72            60. 1-13-72            61. 1-13-72            62. 1-13-72            63. 1-13-72            64. 1-13-72            65. 1-13-72            66. 1-13-72            67. 1-13-72            68. 1-13-72            69. 1-13-72            70. 1-13-72            71. 1-13-72            72. 1-13-72            73. 1-13-72            74. 1-13-72            75. 1-13-72            76. 1-13-72            77. 1-13-72            78. 1-13-72            79. 1-13-72            80. 1-13-72            81. 1-13-72            82. 1-13-72            83. 1-13-72            84. 1-13-72            85. 1-13-72            86. 1-13-72            87. 1-13-72            88. 1-13-72            89. 1-13-72            90. 1-13-72            91. 1-13-72            92. 1-13-72            93. 1-13-72            94. 1-13-72            95. 1-13-72            96. 1-13-72            97. 1-13-72            98. 1-13-72            99. 1-13-72            100. 1-13-72</p>	<p>UNLESS OTHERWISE SPECIFIED TOLERANCES:            3-PLACE DEC. DIMS ±.008            2-PLACE DEC. DIMS ±.010            FRACTIONAL DIMS ±1/64            ANGULAR ±1/2°</p> <p>DRAW WHERE APPLICABLE MUST REMAIN WITHIN DIMENSIONS, UNLESS OTHERWISE SPECIFIED.</p> <p>DO NOT SCALE DRAWING</p>	<p>DATE: 1-13-72</p> <p>SHEET 2 OF 2</p> <p>SDA-2599-NA*</p>

POLARIZING WAFER ASSEMBLY

MOLEX PRODUCTS CO. DATE: 1-13-72

BAJH SHEET 2 OF 2

DOWNERS GROVE, ILL. 60515, U.S.A. SDA-2599-NA\*

THIS DRAWING CONTAINS INFORMATION THAT IS PROPRIETARY TO THE MOLEX PRODUCTS COMPANY AND SHOULD NOT BE USED WITHOUT WRITTEN PERMISSION.

